



**PERFORMANCE  
SERIES**

**GRADE ½**

**CORRELATES WITH BOOK 1 | OPUS 2**

Hear and download this piece at [www.fjhmusic.com](http://www.fjhmusic.com)

# RISE OF THE BLADESMITH

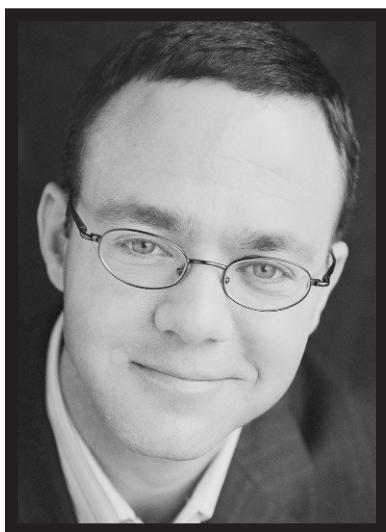
## Brian Balmages

### Instrumentation

1 - Conductor's Full Score	4 - Trombone
8 - Flute	2 - Baritone/ Euphonium
2 - Oboe	2 - Baritone T.C.
2 - Bassoon	4 - Tuba
10 - B♭ Clarinet	1 - Electric Bass
2 - E♭ Alto Clarinet	2 - Bells
2 - B♭ Bass Clarinet	4 - Percussion 1 Snare Drum Bass Drum
4 - E♭ Alto Saxophone	3 - Percussion 2 Brake Drum (Anvil) Small Wood Block Crash Cymbals
2 - B♭ Tenor Saxophone	
2 - E♭ Baritone Saxophone	
8 - B♭ Trumpet	
4 - F Horn	

**T H E  
F · J · H  
M U S I C  
C O M P A N Y  
I N C.  
Frank J. Hackinson**

2525 Davie Road, Suite 360  
Fort Lauderdale, Florida 33317-7424  
[www.fjhmusic.com](http://www.fjhmusic.com)



## The Composer

Brian Balmages (b. 1975) is an award-winning composer, conductor, producer, and performer. He received his bachelor's degree in music from James Madison University and his master's degree from the University of Miami in Florida. Mr. Balmages' compositions have been performed worldwide at conferences including the College Band Directors National Conference, the Midwest Clinic, American String Teachers Association National Conference, and the international trumpet, horn, trombone and tuba/euphonium conferences. His active schedule of commissions and premieres has incorporated groups ranging from elementary schools to professional ensembles, including the Baltimore Symphony Orchestra, the Miami Symphony Orchestra, the University of Miami Wind Ensemble, Boston Brass, members of the United States Marine Band, and the Dominion Brass Ensemble. His music has been performed by members of leading orchestras throughout the country and he has enjoyed world premieres and performances in prestigious venues such as Carnegie Hall and the Kennedy Center, as well as performances at the Macy's Thanksgiving Day Parade.

As a conductor, Mr. Balmages enjoys engagements with numerous all-state and regional honor bands and orchestras along with university and professional groups. Notable guest conducting appearances have included the Midwest Clinic, Western International Band Clinic, College Band Directors Eastern Regional Conference, and MENC. Additional conducting appearances have included the Kennedy Center and Meyerhoff Symphony Hall. He has also served as an adjunct professor of instrumental conducting and Acting Symphonic Band Director at Towson University in Maryland.

Currently, Mr. Balmages is the Director of Instrumental Publications for The FJH Music Company Inc. in Fort Lauderdale, Florida. He resides in Baltimore with his wife, Lisa, and their sons, Jacob and Collin.

---

## About the Music

*Rise of the Bladesmith* conjures images of a master craftsman forging the perfect sword. The dramatic music portrays the intense heat and the relentless pounding as the magnificent blade slowly begins to take shape. The slight reference to the *Dies Irae* helps convey the image of glowing metal, which almost seems to resemble molten lava.

This work correlates with *Measures of Success*® Book 1, Opus 2. No eighth notes appear in wind instruments and range is limited to the first few notes learned on each instrument. Percussionists will need brief instruction on playing a brake drum (or you may use an anvil if one is available). If playing a brake drum, make sure it is placed on a surface that allows the instrument to ring when struck (preferably with a hard object such as a hammer). A wooden stick (such as a drum stick) will not produce the desired sound.

# RISE OF THE BLADESMITH

BRIAN BALMAGES  
(ASCAP)

Forcefully (♩ = 136)

Flute *f*

Oboe *f*

B♭ Clarinet *f*

E♭ Alto Clarinet *f*

B♭ Bass Clarinet *f*

E♭ Alto Saxophone *f*

B♭ Tenor Saxophone *f*

E♭ Baritone Saxophone *f*

Forcefully (♩ = 136)

B♭ Trumpet *f*

F Horn *f*

Trombone  
Baritone/  
Euphonium  
Bassoon *f*

Tuba  
Electric Bass *f*

Bells *f*

Percussion 1  
(Snare Drum,  
Bass Drum) *f*

Percussion 2  
(Brake Drum/Anvil,  
Small Wood Block,  
Crash Cymbals) *f*

Cr. Cym. *f*

2 3 4 5



Hear and download this  
piece at [www.fjhmusic.com](http://www.fjhmusic.com)

Copyright © 2012 The FJH Music Company Inc. (ASCAP).  
International Copyright Secured. Made in U.S.A. All Rights Reserved.  
**WARNING!** The music, text, design, and graphics in this publication are protected by copyright law.  
Any duplication is an infringement of U.S. copyright law.

Fl.

Ob.

Cl.

A. Cl.

B. Cl.

A. Sax.

T. Sax.

B. Sax.

This block contains the musical staves for the woodwind and saxophone section. It includes parts for Flute (Fl.), Oboe (Ob.), Clarinet (Cl.), Alto Clarinet (A. Cl.), Bass Clarinet (B. Cl.), Alto Saxophone (A. Sax.), Tenor Saxophone (T. Sax.), and Bass Saxophone (B. Sax.). The notation is in treble clef with a key signature of one flat (Bb). The music spans measures 6 to 10. Measures 6 and 7 feature a whole note chord in the woodwinds, while measures 8, 9, and 10 show more active melodic lines with various note values and rests.

Tpt.

Hn.

Tbn.  
Bar/  
Euph.  
Bsn.

Tuba  
E.B.

Bells

Perc. 1

Perc. 2

This block contains the musical staves for the brass and percussion section. It includes parts for Trumpet (Tpt.), Horn (Hn.), Trombone/Euphonium/Bassoon (Tbn. Bar/Euph. Bsn.), Tuba/Euphonium Bass (Tuba E.B.), Bells, Percussion 1 (Perc. 1), and Percussion 2 (Perc. 2). The notation is in treble clef with a key signature of one flat (Bb). The music spans measures 6 to 10. Measures 6 and 7 feature a whole note chord in the brass, while measures 8, 9, and 10 show more active melodic lines with various note values and rests. Percussion parts include rhythmic patterns and sustained notes.

Fl.

Ob.

Cl.

A. Cl.

B. Cl.

A. Sax.

T. Sax.

B. Sax.

Tpt.

Hn.

Tbn.  
Bar.  
Euph.  
Bsn.

Tuba  
E.B.

Bells

Perc. 1

Perc. 2

11 12 13 14 15

Detailed description: This is a page of a musical score for measures 11 through 15. The score is written for a large ensemble. The woodwind section includes Flute (Fl.), Oboe (Ob.), Clarinet (Cl.), Alto Clarinet (A. Cl.), Bass Clarinet (B. Cl.), Alto Saxophone (A. Sax.), Tenor Saxophone (T. Sax.), and Bass Saxophone (B. Sax.). The brass section includes Trumpet (Tpt.), Horn (Hn.), Trombone/Euphonium/Bassoon (Tbn./Bar./Euph./Bsn.), Tuba/Euphonium (Tuba E.B.), and Bells. The percussion section includes Percussion 1 (Perc. 1) and Percussion 2 (Perc. 2). The key signature has two flats (B-flat and E-flat), and the time signature is 4/4. The notation includes various note values (quarter, eighth, and sixteenth notes), rests, and dynamic markings (accents). The measures are numbered 11, 12, 13, 14, and 15 at the bottom.

17

Fl.

mp

Ob.

mp

Cl.

mp

A. Cl.

mp

B. Cl.

mp

A. Sax.

mp

T. Sax.

mp

B. Sax.

mp

17

Tpt.

mp

Hn.

mp

Tbn.  
Bar./  
Euph.  
Bsn.

mp

Tuba  
E.B.

Bells

mp

Perc. 1

rim

rim

mp

Wood Block

mp

Perc. 2

16 17 18 19 20

Fl.

Ob.

Cl.

A. Cl.

B. Cl.

A. Sax.

T. Sax.

B. Sax.

Tpt.

Hn.

Tbn.  
Bar./  
Euph.  
Bsn.

Tuba  
E.B.

Bells

Perc. 1

Perc. 2

*mp*

21 22 23 24

Detailed description: This is a page of a musical score for measures 21 through 24. The score is written for a large ensemble. The woodwind section includes Flute (Fl.), Oboe (Ob.), Clarinet (Cl.), Alto Clarinet (A. Cl.), Bass Clarinet (B. Cl.), Alto Saxophone (A. Sax.), Tenor Saxophone (T. Sax.), and Bass Saxophone (B. Sax.). The brass section includes Trumpet (Tpt.), Horn (Hn.), Trombone/Euphonium/Bassoon (Tbn./Bar./Euph./Bsn.), and Tuba/Euphonium Bass (Tuba E.B.). The percussion section includes Bells, Percussion 1 (Perc. 1), and Percussion 2 (Perc. 2). The key signature has two flats (B-flat and E-flat), and the time signature is 4/4. The score shows various musical notations including whole, half, quarter, and eighth notes, rests, and dynamic markings. A mezzo-piano (*mp*) marking is present in measure 24 for the Tuba E.B. part. The measures are numbered 21, 22, 23, and 24 at the bottom.

25

Fl. *mf*

Ob. *mf*

Cl. *mf*

A. Cl. *mf*

B. Cl. *mf*

A. Sax. *mf*

T. Sax. *mf*

B. Sax. *mf*

25

Tpt. *mf*

Hn. *mf*

Tbn. Bar./ Euph. Bsn. *mf*

Tuba E.B. *mf*

Bells *mf*

Perc. 1 head *mf*

Perc. 2 Br. Dr. *mf*

Cr. Cym. *mf*

25

26

27

28

29



Fl.

Ob.

Cl.

A. Cl.

B. Cl.

A. Sax.

T. Sax.

B. Sax.

Tpt.

Hn.

Tbn.  
Bar.  
Euph.  
Bsn.

Tuba  
E.B.

Bells

Perc. 1

Perc. 2

30 31 32 33

Detailed description: This is a page of a musical score for measures 30 through 33. The score is written for a large ensemble, including woodwinds, brass, and percussion. The woodwind section consists of Flute (Fl.), Oboe (Ob.), Clarinet (Cl.), Alto Clarinet (A. Cl.), Bass Clarinet (B. Cl.), Alto Saxophone (A. Sax.), Tenor Saxophone (T. Sax.), and Bass Saxophone (B. Sax.). The brass section includes Trumpet (Tpt.), Horn (Hn.), Tuba/Euphonium/Bassoon (Tbn./Bar./Euph./Bsn.), and Tuba/E.B. (Tuba E.B.). The percussion section includes Bells, Percussion 1 (Perc. 1), and Percussion 2 (Perc. 2). The key signature is one flat (B-flat major or D minor), and the time signature is 4/4. The score shows a variety of musical notations, including eighth notes, quarter notes, and rests, with some measures featuring dynamic markings like accents (>) and breath marks (v). The measures are numbered 30, 31, 32, and 33 at the bottom of the page.

37

Fl.

Ob.

Cl.

A. Cl.

B. Cl.

A. Sax.

T. Sax.

B. Sax.

Tpt.

Hn.

Tbn.  
Bar./  
Euph.  
Bsn.

Tuba  
E.B.

Bells

Perc. 1

Perc. 2

38 39 40 41 42

